

# ARCHITECTURAL SERIES MOUNTING PLATFORM INSTALLATION MANUAL

DISCRETE OPENING SYSTEM, THINLINE BANDPASS SUBWOOFER (BPS6 TL)



**NOTE: THE PROCESS OF MOUNTING THE PLATFORM, PREWIRING, AND INSTALLING DRYWALL AROUND THE PLATFORM ARE THE SAME FOR DRYWALL, WOOD, STONE, OR ANY OTHER SOLID SURFACE INSTALLATION.**

## Preparation

### 1. STORING THE MOUNTING PLATFORM

It is recommended that all materials are kept in their original packaging until just before installation. Store them off the ground in a secure, dry area until they are needed. Keep all materials dry and above freezing. At the time of installation and finishing, all materials must be at a temperature of 55°F (12.8°C) or above.

### 2. CUTTING THE PANEL BRACKET

Mounting platforms are designed so that the opening can be positioned anywhere within standard 12" O.C. to 24" O.C. joist spacing. However, many installations will require the panel bracket to be cut to size. The panel is made of 100% pressed gypsum board - it can be cut using the score and snap method or using a circular saw with a fine tooth blade (or table saw). To cut the panel using the score and snap method, first score the panel from the frontside - this may take multiple passes. Next, flip the panel over - face side down - and snap the panel towards the cut line.

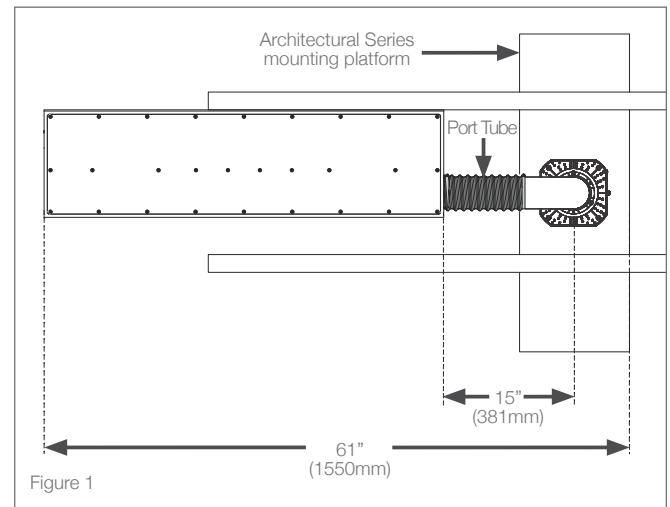
## LOCATING THE MOUNTING PLATFORM

1. Before mounting the platform, ensure that there is enough space to accommodate both the platform and the BPS6 TL Subwoofer.
2. Use the center lines of the mounting platform to align with light fixtures and any other objects in the ceiling.
3. Once the location and availability of space is determined, mount the platform.
4. Mount the BPS6 TL Subwoofer per instructions. Please see BPS6 TL Installation guide for details.
5. Connect the port tube to the Mounting Platform connector, securing the port tube by using the hose clamp provided with the subwoofer hose.

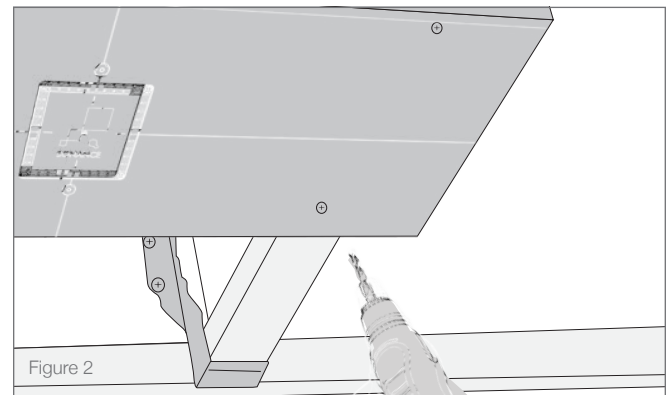
**NOTE: DO NOT OVER TIGHTEN THE HOSE CLAMP. NOTE: ENSURE THAT THE HOSE WILL NOT BECOME DETACHED FROM THE PLATFORM CONNECTOR**

## Installation

**NOTE: BEFORE BEGINNING INSTALLATION OF THE THIN-LINE MOUNTING PLATFORM, SURVEY THE WALL OR CEILING CAVITY FOR OBSTACLES. THE BPS6 TL SUBWOOFER AND TL MOUNTING PLATFORM WILL OCCUPY A GOOD AMOUNT OF SPACE. AT THE POINT OF INSTALLING THIS PLATFORM, THE BPS6 TL SHOULD ALREADY BE SECURED TO THE WALL OR CEILING CAVITY OR WILL BE INSTALLED IN CONJUNCTION WITH THIS PLATFORM. PLEASE SEE BPS6 TL INSTALLATION GUIDE FOR MORE DETAILS (SEE FIGURE 1).**

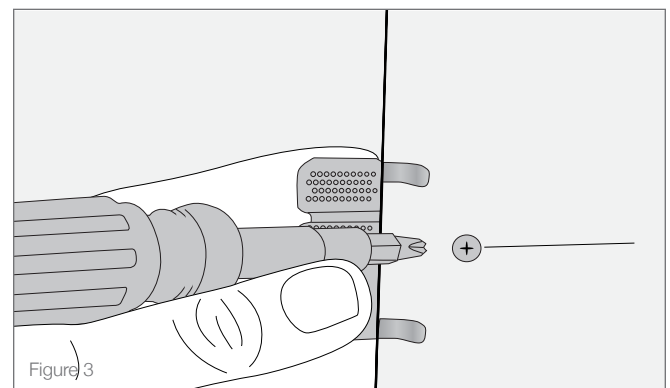


1. Using three drywall screws per joist, fasten the mounting platform to the framing (see Figure 2).



**NOTE: BE SURE TO LOCATE THE TL MOUNTING PLATFORM 15" FROM THE FRONT EDGE OF THE BPS6 TL FROM THE CENTER OF THE MOUNTING PLATFORM CONNECTOR.**

2. Place at least one of the provided patch clips on each of the sides with unsupported drywall. Attach the patch clips to the panel bracket using at least one 1-1/4" drywall screw. Trim off any unsupported drywall that does not have a patch clip attached (see Figure 3).



3. The BPS6 TL ships with a foam plug and tether inserted into the end of the port tube; **remove and discard**. Guide the port tube onto the 90 degree connector of the mounting platform so the tube is positioned snugly in place. Tighten the clamp ring to secure the port tube (see Figure 4).

For BPS6 TL installation details visit:  
[www.sonance.com/in-wall-in-ceiling/bps6-tl](http://www.sonance.com/in-wall-in-ceiling/bps6-tl)

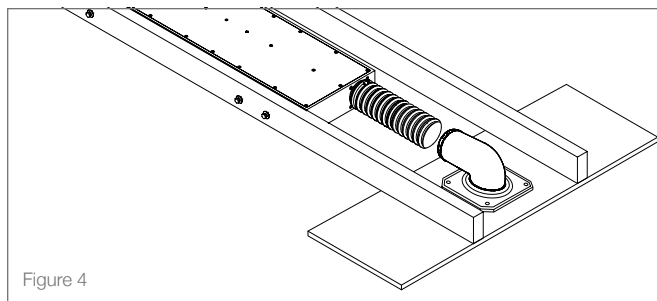


Figure 4

## Prewire

1. Prewire to the woofer location - use provided strain-relief (see figure 5).

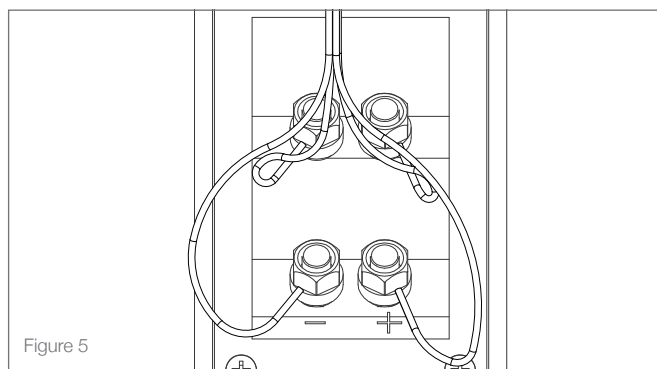


Figure 5

**NOTE: VERIFY THAT THE SUBWOOFER IS OPERATIONAL BEFORE CLOSING THE CEILING OR WALL.**

## Drywall Installation

1. Have the drywall contractor fit & install the drywall around the AS mounting platform being sure to fasten at least one 1-1/4" drywall screw to each patch clip location (see Figure 6).

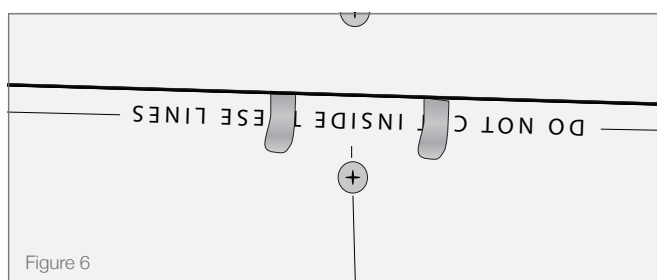


Figure 6

2. After all drywall has been hung and patch clips are fastened, snap off the patch clip tabs as shown above using a pair of pliers.

## Mudding the Panel

This section will detail the next portion of the install process for drywall applications only including mudding the panel, sanding the panel, and painting the walls.

Below are the steps required in order to achieve a level 5 smooth wall/ceiling finish on an Architectural Series mounting platform. If a ceiling with Architectural Series is specified with less than a level 5 finish, it is highly recommended that the specification for that wall be changed to level 5.

For more information about the different levels of drywall finishes visit the USG website: <http://bit.ly/2lidDcD>

1. Before applying mud, be sure that the sanding shield is still in place securing in the speaker opening. Using quick-set compound, fill all gaps and let fully cure (see Figure 7).

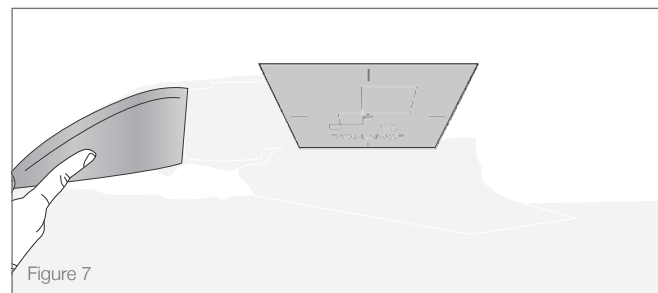


Figure 7

2. Using mesh tape, apply tape around all adjoining surfaces. This includes areas around the mounting platform and around the speaker opening as shown in the photo below (see Figure 8).

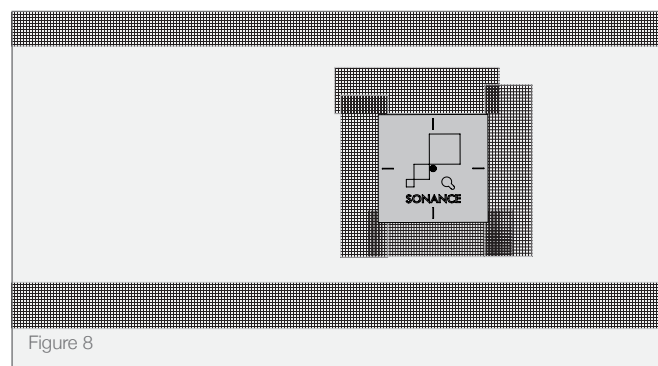


Figure 8

3. Coat the tape and entire Mounting Platform with joint compound. This ensures all pits and valleys have been filled. Before fully cured, scrape off any raised portions. Let mud fully cure (see Figure 9).

**NOTE: THIS COAT IS A VERY THIN LAYER. DO NOT BUILD THE FIRST LAYER OF MUD TO THE TOP OF THE MUD DAM.**

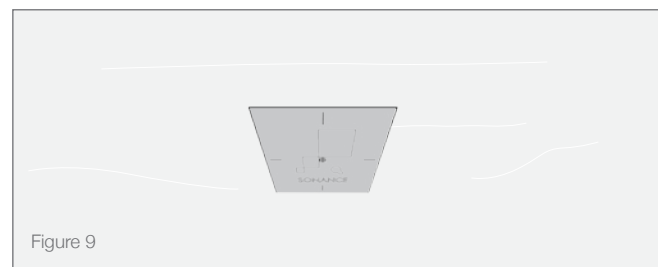
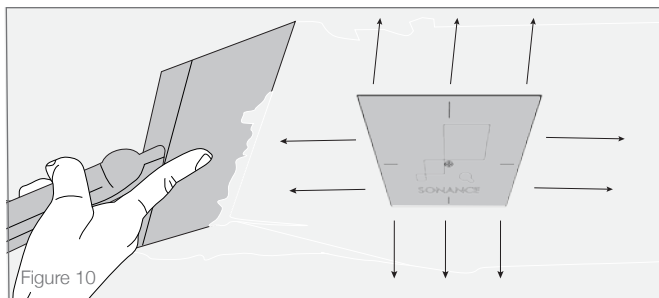
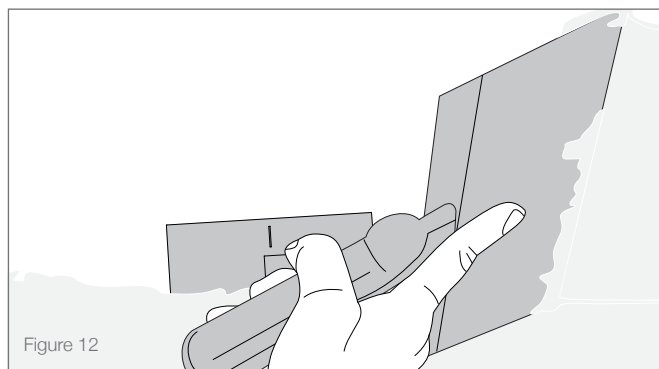


Figure 9

4. Next, cover the entire 1st coat with another layer of mud being sure to work from the opening and pulling outward towards the perimeter. This coat will cover the entire 1st coat area plus even more to create a smooth transition. Again, this coat should not reach the top of the mud dam. It should be very thin. Let mud fully cure but **DO NOT SAND** (see Figure 10).

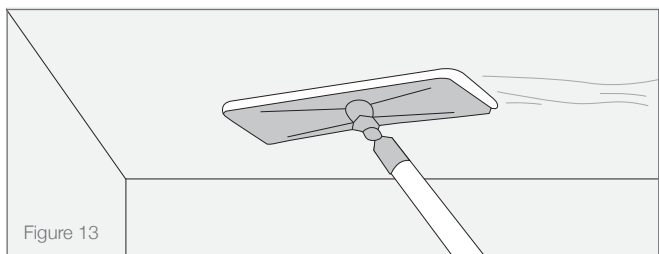


5. Continue to build coats three and four in a similar fashion. Build upon the previous layer and expanding the mud perimeter over the previous layer's perimeter. On the 4th and final coat, be sure to completely cover the sanding shield with mud as demonstrated above. Allow this coat to dry. This will be the last and final coat before sanding. (see Figure 12).

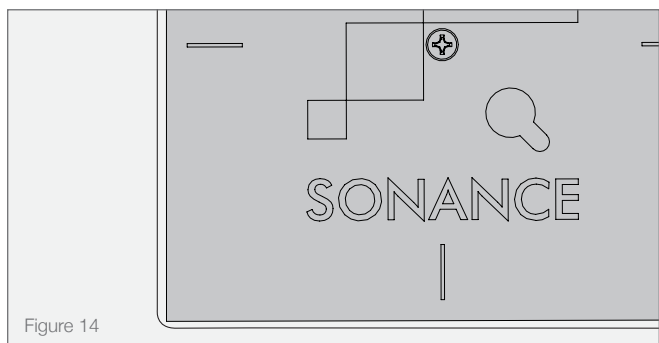


## Sanding

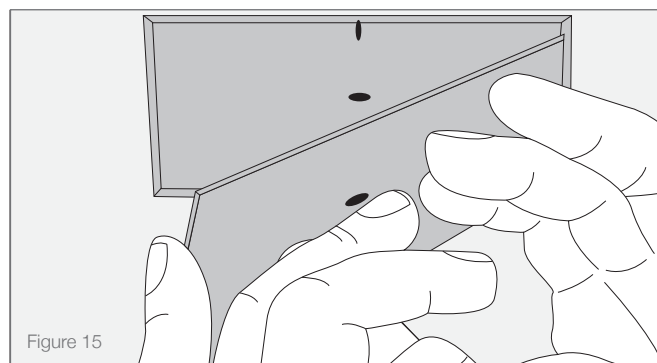
- Using a sanding pole with a 60 micron film, sand the drywall and the opening until the entire perimeter of the sanding shield is exposed. It is important to use a firm sanding tool, a sanding sponge will cause "dishing" around the opening. (see Figure 13).



- Check that there is a well defined edge around the entire perimeter of the sanding shield and feel the area around the speaker opening. The sanding shield should not be raised in comparison to the surrounding compound. The sanding shield and drywall compound should be completely flush and drywall should be smooth (see Figure 14).

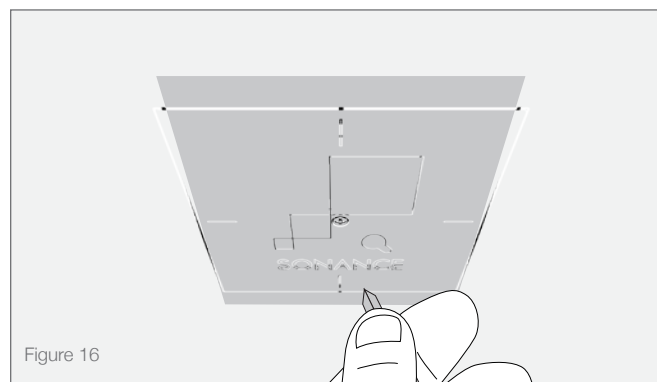


- Once the sanding is complete, push firmly on the sanding shield to break any adhesion to surrounding surfaces. Next, remove the screw in the center of the shield. Then remove the shield using a screw and a pair of pliers or a slotted screw driver (see Figure 15).



## Wall Painting

- Before painting the surface, it's important to make sure the provided paint shield is still in place. This shield provides for a precise and easy way to mask the opening. First, make sure the opening is completely free of excess drywall mud and debris (see Figure 16).



**NOTE: NO ADDITIONAL MASKING TAPE IS NEEDED OVER THE PAINT SHIELD. ONCE THE PAINTING IS COMPLETE, IT WILL BE DISCARDED.**

- Painting a wall/ceiling with Architectural Series openings is no different than painting any other drywall surface. The paint can be rolled directly over the openings - cutting around with a brush is not necessary. Before the paint is completely dry, it is a good idea to clean-up the area inside the mud dam using a dry mini roller (1") or a dry paintbrush. Simply roll the roller or run the paintbrush around the mud dam edge to help prevent any unnecessary build-up, or drips around the opening.

©2018 Sonance. All rights reserved. Sonance is a registered trademark of Dana Innovations. Due to continuous product improvement, all features and specifications are subject to change without notice. For the latest Sonance product specification information visit our website: [www.sonance.com](http://www.sonance.com)

SONANCE • 991 Calle Amanecer • San Clemente, CA 92673 USA  
Phone: (949) 492-7777 • FAX: (949) 361-5151 • Technical Support: (949) 492-7777